



TYPHOON MK1

Heavy Duty Work Class ROV



OVERVIEW

The Typhoon MK1, Work Class ROV system, has the following information that defines the current system configuration. Many other tooling options are available upon request. It is designed and built in Australia to be a cost effective and client-focused answer to your ROV needs. The Typhoon can be installed in an ROV hanger, or supplied with a Control and Workshop container for installation on deck



FEATURES

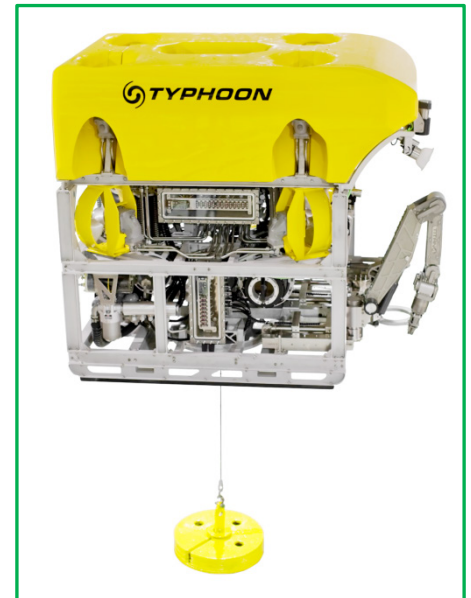
Electronic Architecture

Distributed node control including automated heading and station hold. Expandable RS485 network with a range of quick-change PCBs for different applications. Dual redundant control and modem interface.

Manipulators

Two manipulators on extendable TMT Z Extensions are provided. The Z Extension provides 300mm of controlled movement in the Z axis (fwd-aft) for manipulators. A third central Z Extension is available for tooling. Manipulator options include:

- Schilling T4, 7-function, Master / Slave
- Schilling RigMaster, 5-function, rate
- Schilling Atlas, 7-function, rate
- TMT Guidepost Grabber, 2-function, rate



Tooling Interface

8x 0-20L/min, 3000psi for Manipulators
2x High Flow 0-100L/min, 0-3000psi
5x Ultra High Flow direct to main 200L/min HPU
5x Med Flow direct to secondary 50L/min HPU
1x Ancillary HPU interface
See overleaf for standard tooling options

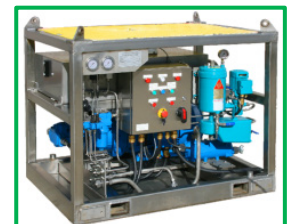
Seabed Reference Positioning System

The Seabed Reference Positioning System (SRPS) increases visibility by eliminating the need for vertical thrust near the ocean floor. The ROV can use the SRPS for precise vertical positioning and for heavy lift assistance.



ROV Instrumentation

- Depth sensor
- Fluxgate compass
- Sonar





TYPHOON MK1

Heavy Duty Work Class ROV



ROV

Depth Rating	1000msw
Length	3m
Width	1.9m
Height	2.4m
Weight	4400kgs
Frame Proof Load	12,500kgs
Through Frame Lift	500kg

ROV THRUST

Four Vertical and Four Horizontal Thrusters	
Forward / Astern	800kg
Lateral PORT / STBD	800kg
Vertical Up / Down	800kg

ROV HPU

100HP (Max)
230L/min (Primary) @ 207bar (3000psi)
80L/min (Auxiliary) @ 207bar (3000psi)
Variable Axial Piston Pumps

ROV ELECTRICAL SYSTEMS

Frequency	60Hz ± 5%
Voltage	440VAC ± 5%
ROV HPU	150kVA, 3250VAC
ROV Instruments	6kVA, 1500VAC
Pan & Tilt	1x Front 1x Rear

Lights:

	2 Halogen
	6x 24VDC LED

Cameras:

	8x Colour
	Zoom + Focus
Data Channels	4 Aux Data Channels
Sonar	Imaginex 881A

MANIPULATORS

Standard:

	Schilling T4, 7-function, Master / Slave
	Schilling RigMaster, 5-function, rate
	TMT Guidepost Grabber, 2-function, rate

Optional:

	Schilling Atlas, 7-function, rate
--	-----------------------------------

EMERGENCY RECOVERY DEVICES

Strobe	Novatech ST400A
Acoustic Beacon	1x RJE ULB-362PL

SRPS

Capacity	50m
SRPS weight	500kgs

20' CONTROL VAN

Length	6.1m
Width	2.4m
Height	2.75m
MGM	16,000kg
Non-Hazardous Area	Standard
HVAC	2x 7kW
Integrated Workshop	

WORKSHOP

Separate wet and dry working areas	
Lifting Rail	1000kg
HVAC	7kW
Workbench, Storage, Spares	

DECK HPU - OPTION

Hydraulic Power	22kW
Operating Pressure	0 to 250bar
Maximum Pressure	250bar
Maximum Output Flow	52L/min

A-FRAME - OPTIONS

	1	2
Safe working load	15T	10T
Design factor	3.0 global	3.0 global
Outreach	3.0m	4.0m
Dimensions	4 x6m	3 x6m
Gross weight	15,000kgs	8000kgs
Sheave wheel diameter	1200mm	1600mm
Hydraulic damping	+/- 10°	N/A
Latch rotation	355°	N/A

WINCH - OPTION

Umbilical Diameter	42mm
Drum Capacity	2000m
Length	3.5m
Width	2.5m
Height	3.1m
Weight	25T

Dual VSD electrical drive

AVAILABLE ROV TOOLS

Gasket Ring Tool	Hotstabs
Water Blaster	Hotstabs
Guide Post Cutter	PH Meter
Mini Dredge	Fluid Transfer Skid
Rig Floor Monitor	Guidewire Latch System
Current Meter	Guidewire Latch
Mega Digger	Systems
Hotstabs	Current Meter
CP Probe	
Densitometer	

